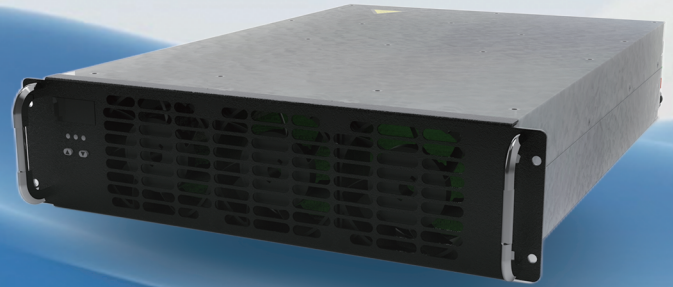




Charging Module

30kW



This is a DC fast charging module that combines high efficiency, versatility, and intelligent management. It supports a wide voltage output range from 300V to 1000V.



Fault Rate $\leq 0.2\%$

High reliability to ensure efficient charging services



Highest Efficiency of 96%

Efficiency exceeds industry standards by 2%, reducing energy waste and lowering charging costs.



Infinite Fan Speed Adjustment

Provide a customizable charging experience while reducing noise.

Technical Specification

Basic indicators	Size (W × D × H)	300 mm × 437.5 mm × 84 mm
	Weight	$\leq 15.5\text{kg}$
	Effectiveness	Maximum load efficiency 96%, maximum efficiency 95%
	Cooling Way	Fan cooling
Input features	Input Voltage	260~485 Vac (EU) 260~530 Vac (VA)
	Voltage Type	Three-phase four-wire system(3W+PE)
	Input Frequency	55 \pm 10Hz
	Thd (Total Harmonic Distortion)	$\leq 5\%$
Output features	Output Voltage	150-1000 Vdc
	Output Power	30000W (300-1000V)
Environmental features	Working Temperature	- 40°C ~+75°C
	Storage Temperature	- 40°C ~+80°C
	Relative Humidity	$\leq 95\%$ (No condensation)
	Noise Level	$\leq 65\text{ dB}$



INVT Electric Vehicle Drive Technology(Shenzhen) Co., Ltd.

Add: 3F, Block B, INVT Guangming Technology Building, Songbai Road, Matian, Guangming District, Shenzhen

Website: www.invt-ev.com

Email: invt-emobility@invt.com.cn

INVT E-mobility

